

Bridging the Gap

CWMA's Fighting Invasives Across Boundaries



Brooke Gray, Coordinator

Lake County CWMA

What is a Cooperative Weed Management Area?

- Local organizations working to control invasives on a watershed level
- Bringing together landowners and land managers, working across boundaries
- Programs vary greatly

What's the retirement plan like?



Education and Outreach



Cost-share funds for weed control

Weed control and restoration (manual, biological & chemical methods)

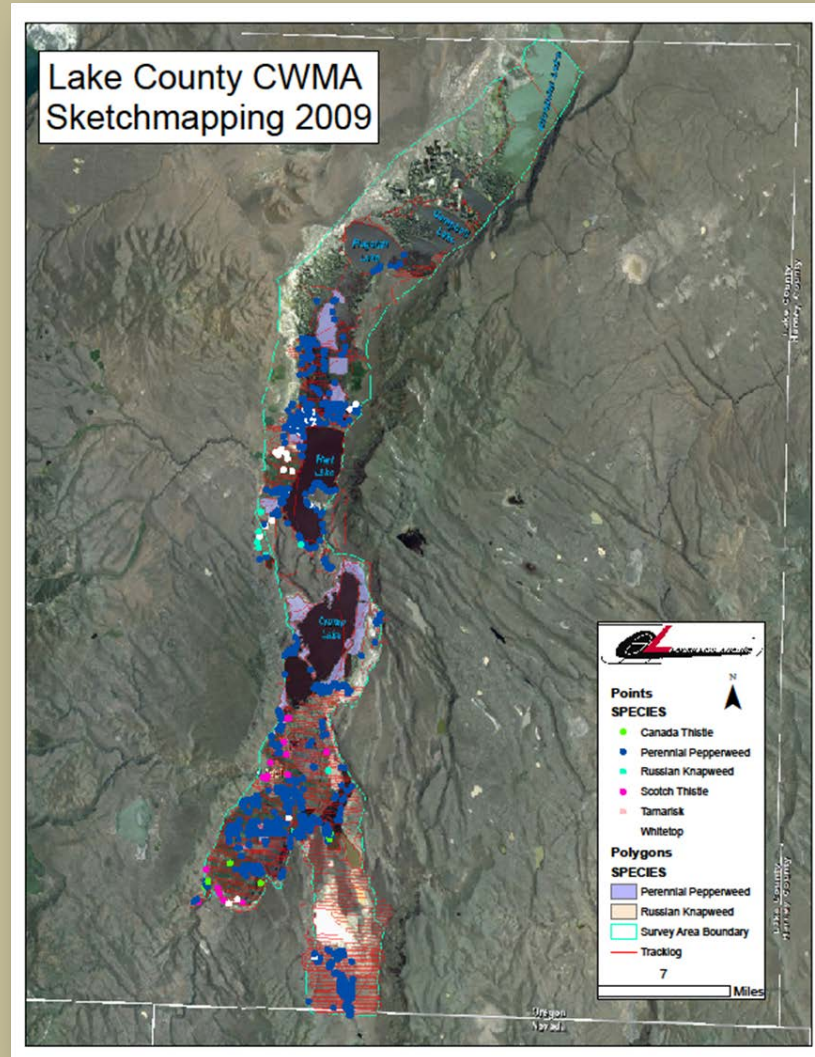


Weed prevention

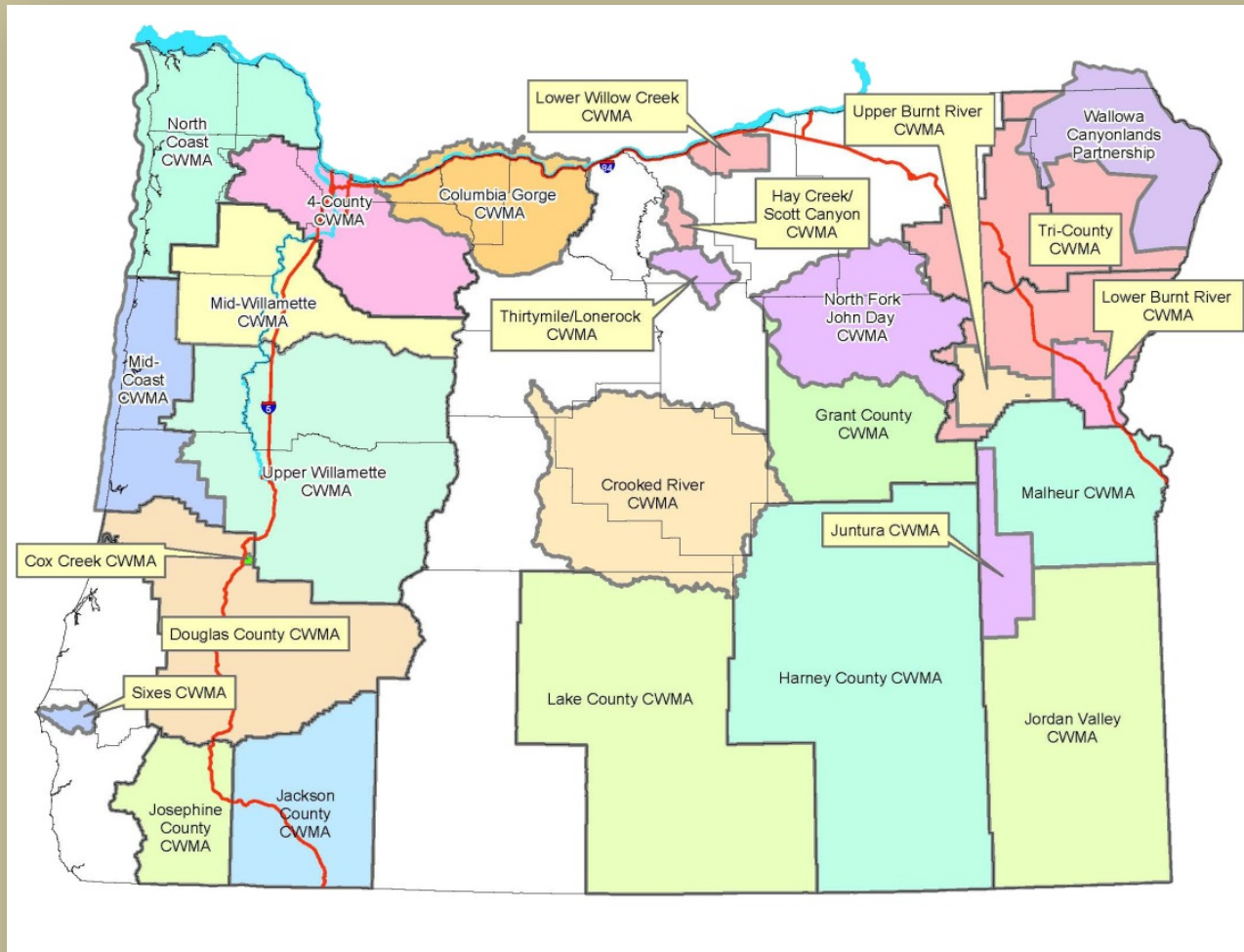
Early Detection and Rapid Response



Monitoring and Mapping



Oregon CWMA Association



Oregon CWMA Association

Board Members

- Northwest Region:
Vern Holm, NW Weed Management Partnerships
- Southwest Region:
Chrissy Morgan, Douglas County CWMA
- Northeast Region:
Mark Porter (for a little bit), Tri-County CWMA
- Central Region:
Priscilla Johnson, Crooked River WMA
- Southeast Region:
Brooke Gray, Lake County CWMA

What are we up to?



2012 Interagency Noxious Weed Symposium, Corvallis Oregon

Cooperative Weed Management Area



Keyword....PARTNERSHIP!

Typical Partners

USFS

County Weed Supervisors

BLM

Private Landowners

ODFW

Community Members

SWCD

Public Works

ODOT

Road Departments

Counties

School Districts

Watershed Councils

Private Applicators

Extension Service

Local Paper

Educate each other



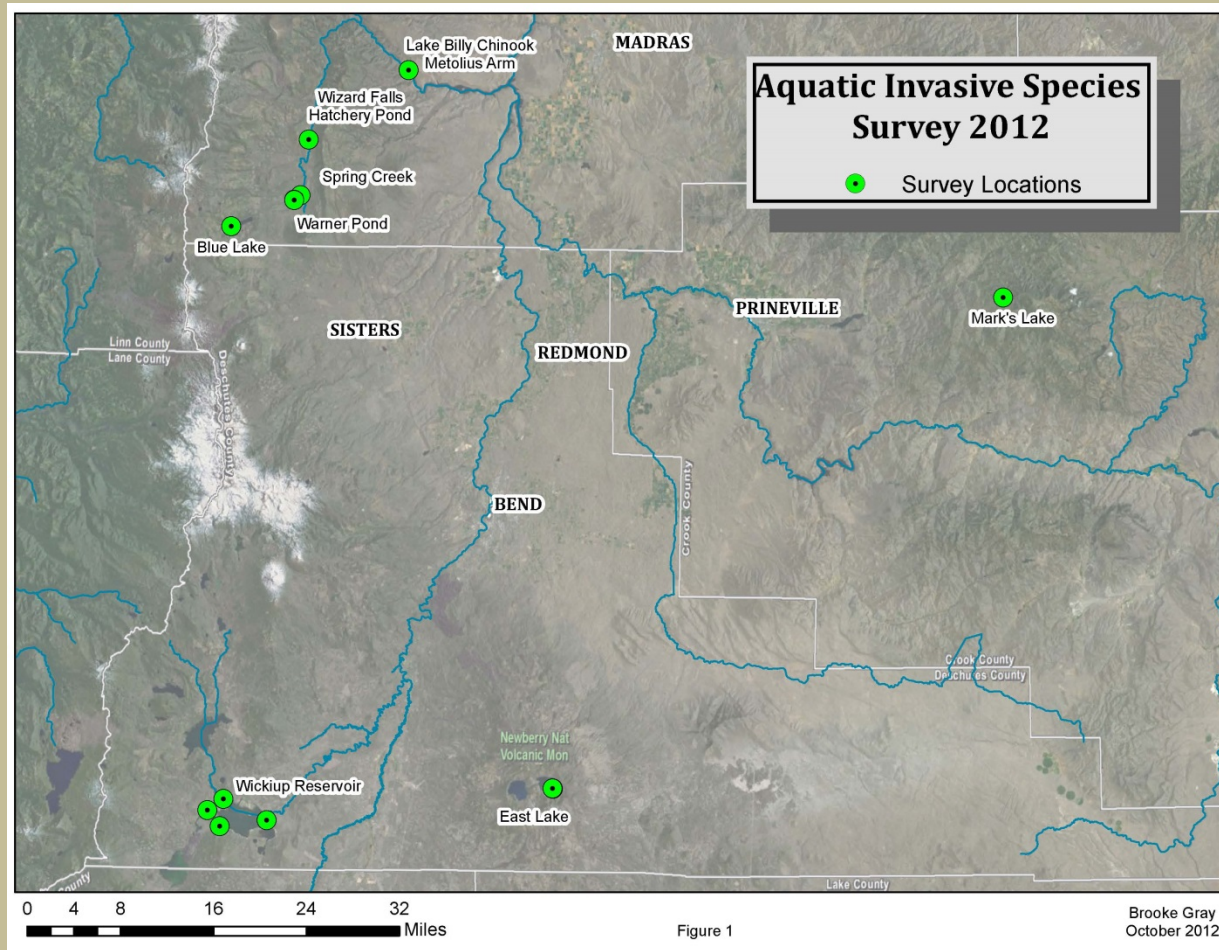
Avoid costly mistakes and combine efforts



Work across Fencelines



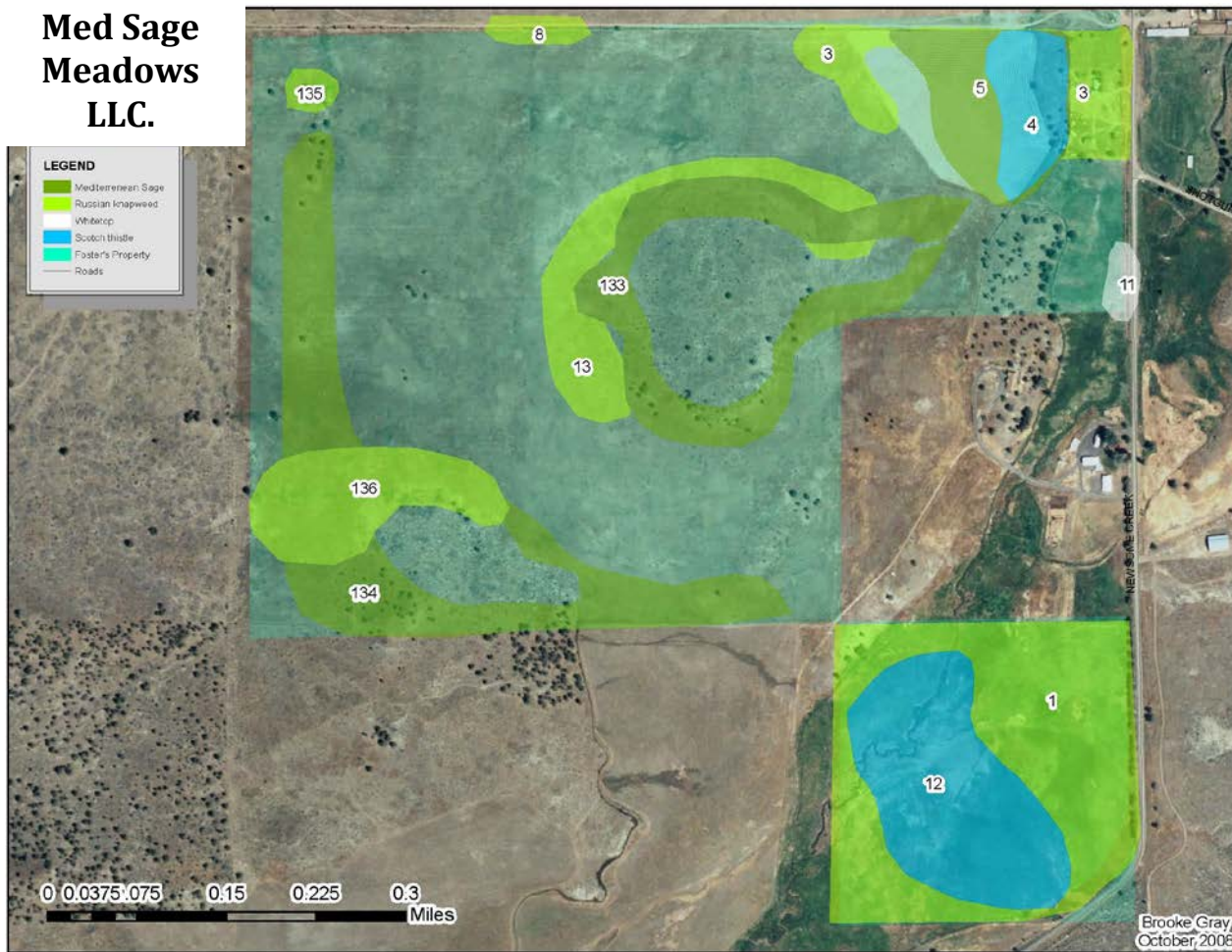
Coordination



Work across Fencelines

BLM Land

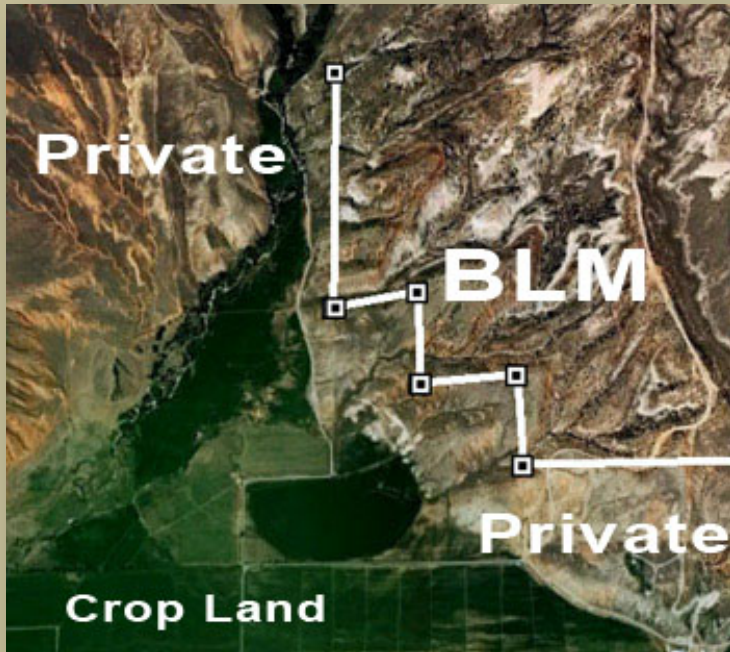
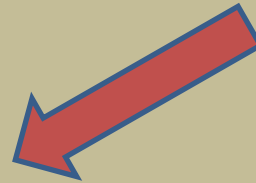
Med Sage
Meadows
LLC.



Neighboring
Ranch

USFS
Land

How do we do it?



Just like you minus....



....and tech support

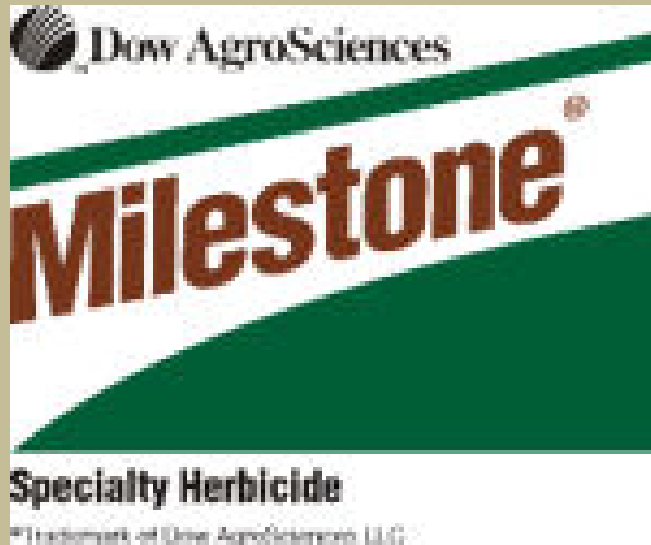


WWW.IGOTNOTHING.NET



©ALEXANDER C VAN HATTEM

But we have good stuff



My favorite survey/treatment methods



Planes



Trains



ATV mobiles



Sometimes horses



Although....



KNAPWEED
IS YUMMY!

Or this way



Do You Work With Weeds?



Then you should be
associated with a
CWMA!

Questions?



Brooke Gray, LCCWMA

lakecoutnyweeds@gmail.com

541-233-8975